

Taping specifications for Raidal Type:

Fig.1 : Code T1/R1 : Ammo / Reel Tape (Φ4 - Φ6.3)

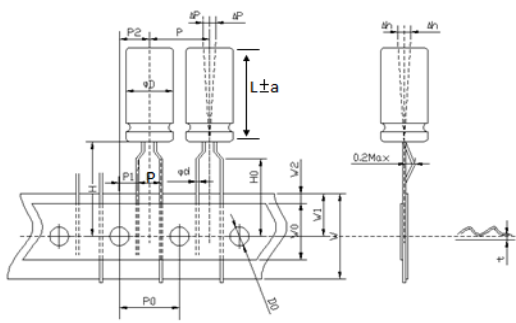


Fig.2 : Code T1/R1 : Ammo / Reel Tape (Φ8)(P3=2.0~2.7, θ=110°±15°)

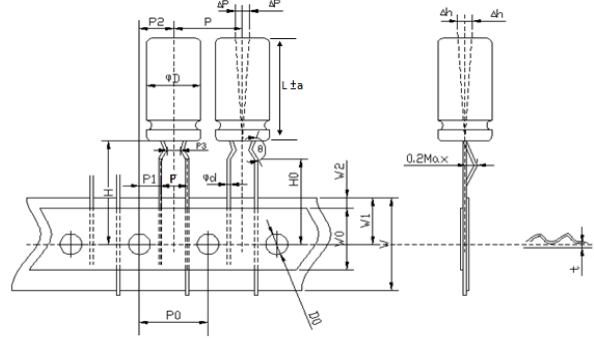


Fig.3 : Code T1/R1 : Ammo / Reel Tape (Φ10)

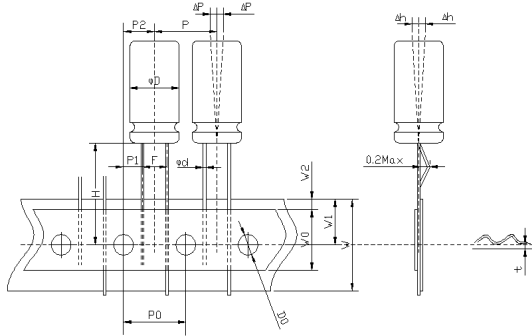


Fig.4 : Code T1 : Ammo Tape (Φ13~Φ18)

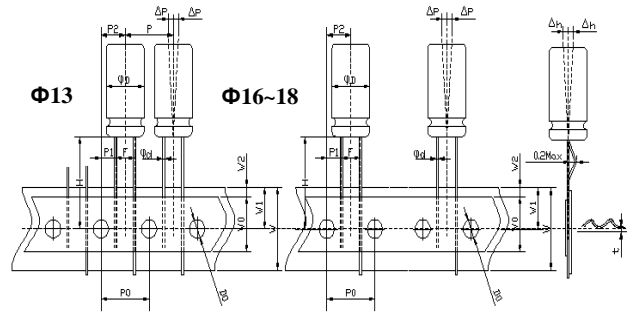


Fig.5 : Code T2/R2 , Φ4 ~ Φ8

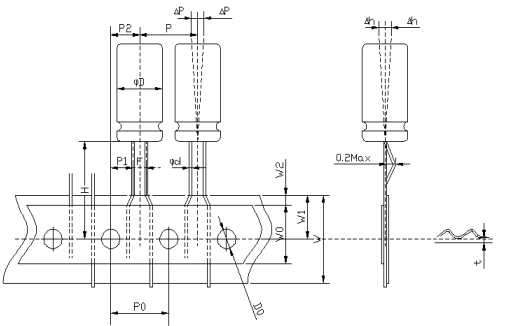
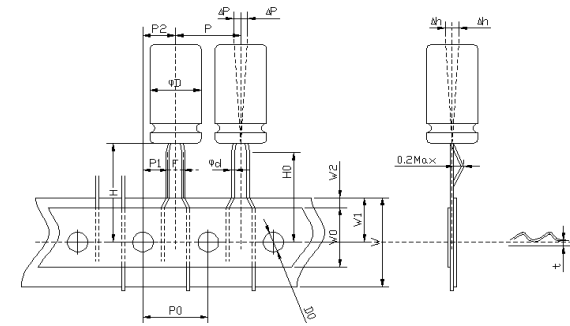


Fig.6 : Code T4/R3 : Ammo / Reel Formed Tape (Φ4~Φ5 / pitch 2.5mm)



unit : mm

Code	Symbol	φ d	P	P0	P1	P2	F	W	W0	W1	W2	H	H0	D0	ΔP	Δh	t	
T1/R1	Tolerance	±0.05	±1.0	±0.3	±0.5	±1.0	+0.6/- 0.2	±0.5	min	±0.5	max	±0.5	±0.5	±0.3	max	max	±0.3	
	4x5	0.45	12.7	12.7	3.85	6.35	5.0	18.0	8.0	9.0	2.0	18.5	16.0	4.0	0.2	0.2	0.6	
	5x5~11	0.45or0.5	12.7	12.7	3.85	6.35	5.0	18.0	8.0	9.0	2.0	18.5	16.0	4.0	0.2	0.2	0.6	
	6.3x5~11	0.45or0.5	12.7	12.7	3.85	6.35	5.0	18.0	8.0	9.0	2.0	18.5	16.0	4.0	0.2	0.2	0.6	
	Tolerance	±0.05	±1.0	±0.3	±0.7	±1.0	+0.6/- 0.2	±0.5	min	±0.5	max	±0.5	±0.5	±0.3	max	max	±0.3	
	8x5~30	0.45~0.6	12.7	12.7	3.85	6.35	5	18.0	8.0	9.0	2.0	18.5	16.0	4.0	0.2	0.2	0.6	
	Tolerance	±0.05	±1.0	±0.3	±0.5	±1.0	+0.6/- 0.2	±0.5	min	±0.5	max	±0.5	—	±0.3	max	max	±0.2	
	10x10~30	0.6	12.7	12.7	3.85	6.35	5	18.0	8.0	9.0	2.0	18.5	—	4.0	0.2	0.2	0.7	
	Tolerance	±0.05	±1.0	±0.3	±0.7	±1.3	+0.6/- 0.2	±0.5	min	±0.5	max	±0.5	—	±0.3	max	max	±0.3	
	12.5x15~25	0.6	15	15	5.00	7.50	5.0	18.0	8.0	9.0	2.0	18.5	—	4.0	0.2	0.2	0.7	
13x13~40	0.6	15	15	5.00	7.50	5.0	18.0	8.0	9.0	2.0	18.5	—	4.0	0.2	0.2	0.7		
16x16~40	0.8	30	15	3.75	7.50	7.5	18.0	8.0	9.0	2.0	18.5	—	4.0	0.2	0.2	0.7		
18x20~32	0.8	30	15	3.75	7.50	7.5	18.0	8.0	9.0	2.0	18.5	—	4.0	0.2	0.2	0.7		
T2/R2	Code	Symbol	Φ d	P	P1	P0	P2	F	W	W0	W1	W2	H	—	D0	Δp	—	t
	Tolerance	±0.05	±1.0	±0.5	±0.3	±1.0	+0.6/-0.2	±0.5	min	±0.5	max	±0.5	—	±0.3	max	—	±0.2	
	4x5~7	0.45	12.7	12.7	5.6	6.35	1.5	18	8	9	2.0	18.5	—	4	0.2	—	0.6	
	5x5~11	0.45or0.5	12.7	12.7	5.35	6.35	2	18	8	9	2.0	18.5	—	4	0.2	—	0.6	
	6.3x5~11	0.45or0.5	12.7	12.7	5.1	6.35	2.5	18	8	9	2.0	18.5	—	4	0.2	—	0.6	
8x5~20	0.6	12.7	12.7	4.6	6.35	3.5	18	8	9	2.0	18.5	—	4	0.2	—	0.6		
T4/R3	Code	sign	Φ d	P	P0	P1	P2	F	W	W0	W1	W2	H	H0	D0	ΔP	Δh	t
	Tolerance	±0.05	±1.0	±0.3	±0.5	±1.0	+0.6/- 0.2	±0.5	min	±0.5	max	±0.5	±0.5	±0.3	max	max	±0.3	
	4x5~4x7	0.45	12.7	12.7	5.1	6.35	2.5	18.0	8.0	9.0	2.0	18.5	17.0	4.0	0.2	0.2	0.6	
5x5~5x11	0.45or0.5	12.7	12.7	5.1	6.35	2.5	18.0	8.0	9.0	2.0	18.5	17.0	4.0	0.2	0.2	0.6		

Cut/Formatted Lead For Radial Lead Type :

Shape	Suitable size	Shape	Suitable size
Code C5 : Straight Cut 	ΦD=4~18	Code K2 : Kink cut, & Crimping 	ΦD=4~18
Code F* : Molding Truncation type 	ΦD=4~8	Code V* : Horizontal processing 	ΦD=4~18

unit : mm

C	Code	1	2	3	4	5	6	7	8	9	A	B	C	D	E	F	G	H
	L	2.5	2.8	3.2	3.4	4.0	4.5	5.0	5.5	6.5	7.0	8.0	10.0	3.6	6.0	3.2	4.2	2.4
	Code	J	K	L	M	N	P	Q	R	S	T	U	V	X	Y	Z	W	
	L	4.2	3.7	12.0	2.0	2.2	2.5	13.5	9.0	20.0	16.0	18.0	3.0	13.0	12.5	15.0	3.1	

P	Code	1	2	3					
	L	11.0	3.8	14.0					
K	Code	1	2	3	4	5	6	7	9
	L	3.2	4.5	5.0	3.5	4.0	4.3	3.5	3.2
	Code	A	B	E	D	F	H	K	L
	L	3.3	3.6	3.6	3.3	18.0	7.0	6.8	4.0

X	代碼	3
	L1	1.8±0.2
	L2	3.0±0.2

F	Code	1	2	3	4	5	6	7	8	9	A	B	C	D	E	F	G	H
	L	3.0	3.1	3.2	3.4	3.5	4.0	4.8	4.5	3.2	6.0	4.3	5.0	3.0	3.6	5.0	3.0	6.5
	Code	J	K	L	M	N	O	P	Q	R	S	T	U	V	W	Z	I	
	L	3.7	2.5	2.2	1.5	2.9	3.7	7.0	4.2	9.0	2.8	3.7	2.4	4.0	3.1	4.5	4.0	

V	Process number	1	2	6	J	Q	F	8	N
	L1	1.25±0.25	2.5±0.5	2.5±0.25	1.0±0.5	1.5±0.5	1.25±0.25	2.0±0.5	2.2±0.5
	L2	2.6±0.3	3.5±0.5	4.1±0.5	3.85±0.25	3.0±0.5	11.5±0.5	4.0±0.5	<3.6
	Process number	5	P	3	Y	R	G	9	Z
	L1	2.5±0.25	5.0±0.5	2.5±0.25	1.0±0.5	1.5±0.5	1.0±0.2	2.0±0.5	2.2±0.5
	L2	3.25±0.25	3.25±0.25	4.1±0.5	3.85±0.25	3.0±0.5	2.4±0.3	4.0±0.5	<3.6
	Process number	B	S	U	H	D	O	E	M
	L1	2.5±0.5	2.0±0.5	3.5±0.3	1.0±0.2	2.0±0.5	2.5±0.5	1.5±0.2	3.3±0.2
	L2	3.3±0.5	3.5±0.3	5.0 +0,-0.5	2.4±0.3	6.7±0.5	7.0±0.5	2.25±0.25	3.25±0.25
	Process number	X	W	V	7	C	A	4( Don't cut the foot )	T
	L1	2.5±0.5	2.0±0.5	1.0±0.5	2.0±0.5	<1.6(containΦd)	2.5±0.3	4.0±0.5	<2.0
	L2	5.8±0.5	2.5±0.5	3.5±0.3	3.2±0.4	2.0±0.5	3.7±0.3	15.5±0.5	9.3±0.5

O	Process number	1	2	5	8	B	G	H	M
	L1	2.0±0.3	1.±0.2	1.2±0.25	1.0±0.3	1.5±0.5	1.5±0.5	1.5±0.5	3.0±0.5
	L2	3.7±0.3	3.7±0.3	2.0±0.2	2.3±0.2	6.5±0.2	3.2±0.2	5.0±0.2	6.0±0.5

Z	Process number	3	C	I	U	4	6	7	8
	L1	2.0+0/0.5	2.5±0.5	1.0±.2	1.2±.2	2.5±0.5	1.0±0.2	4.0±.5	2.5±0.3
	L2	3.85±0.25	4.6±.5	3.0±.2	2.8±.3	3.85±0.25	3.80±0.2	3.4±0.5	3.5±.3

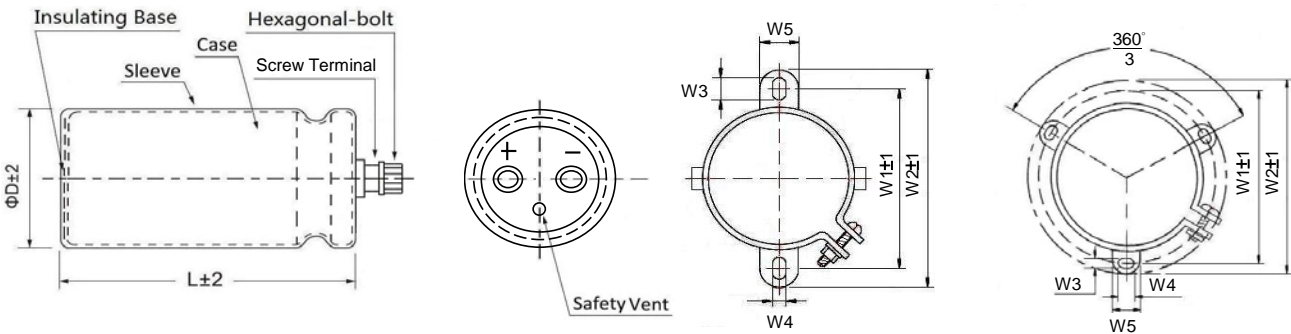
Note: if the above size can not satisfied your need please contact us.

Available Terminals For SNAP-IN Type :

<p>Standard product code: S1G( the NO.13 code is G)</p> <p>apply to size <math>\Phi 22\sim 35</math></p>	<p>Standard product code: S1A( the NO.13 code is A)</p> <p>apply to size <math>\Phi 22\sim 35</math></p>
<p>Code: LL</p> <p>apply to size <math>\Phi 25\sim 35</math></p> <p>Hole of PCB (one side of soldering)</p>	<p>Three terminal code: L3</p> <p>apply to size <math>\Phi 25\sim 35</math></p> <p>Hole of PCB (one side of soldering)</p>
<p>Horizontal code: V3</p> <p>apply to size <math>\Phi 22\sim 35</math></p> <p>Hole of PCB (one side of soldering)</p>	<p>Four terminal code: L4</p> <p>apply to size <math>\Phi 35\sim 45</math></p> <p>Hole of PCB (one side of soldering)</p>
<p>代码: LT</p> <p>apply to size <math>\Phi 22\sim 35</math></p>	<p>代码: LC</p> <p>apply to size <math>\Phi 35\sim 45</math></p>

Available Terminals For Screw Type :

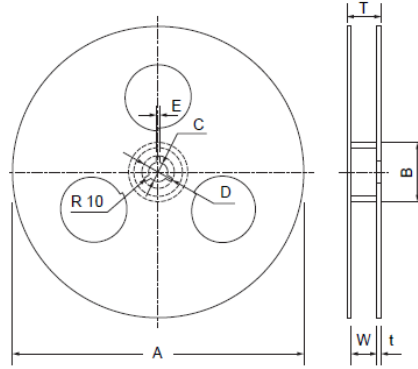
Standard product code: A1



$\Phi D$	W1	W2	W3	W4	W5
35	48.0	58.0	6.0	3.5	10
51	63.5	73.0	5.0	7.0	14
64	76.2	85.1	5.0	7.0	14
77	88.9	98.4	5.0	7.0	14
90	101.6	111.1	5.0	7.0	14

Packaging Specification

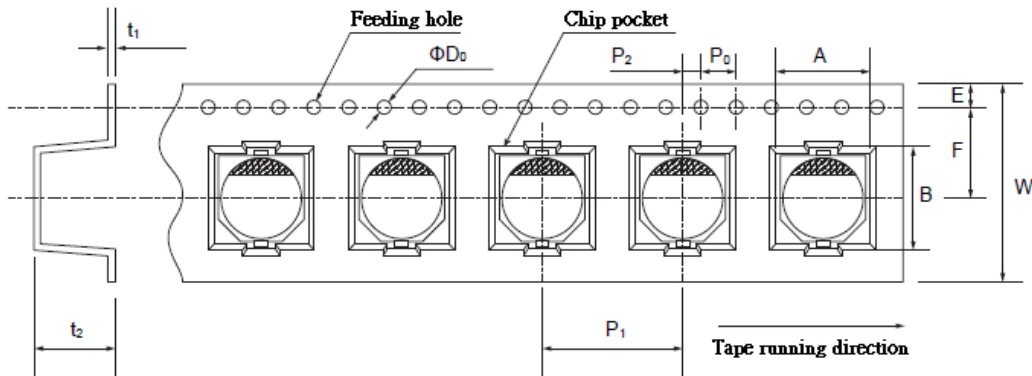
1.SMD Packing Specification



Size Unit : mm

Size	A	B	C	D	E	W	T	t
4Φ ~ 5Φ	380±2	84min	13.0±0.5	42	2.0±0.5	14±1	18±1	2.0
6.3Φ ~ 8× 6.7	380±2	84min	13.0±0.5	42	2.0±0.5	18±1	22±1	2.0
8×10.2 ~ 10Φ	380±2	84min	13.0±0.5	42	2.0±0.5	26±1	30±1	2.0
12.5Φ	380±2	84min	13.0±0.5	42	2.0±0.5	32±1	36±1	2.0
16.0Φ	380±2	84min	13.0±0.5	42	2.0±0.5	44±1	48±1	2.0

① Reel Tape



Size Unit : mm

Symbol SizeDxL	W	A	B	Po±0.1	P1	P2±0.1	F	ΦD <sub>0</sub>	t1	E	t2
4x5.4	12.0	4.7	4.7	4.0	8.0	2.0	5.5	1.5+0.1-0	0.4	1.75	5.8
5x5.4(5.8*)	12.0	5.7	5.7	4.0	12.0	2.0	5.5	1.5+0.1-0	0.4	1.75	5.8
6.3x5.4(5.8*)	16.0	7.0	7.0	4.0	12.0	2.0	7.5	1.5+0.1-0	0.4	1.75	5.8
6.3x7.7*	16.0	7.0	7.0	4.0	12.0	2.0	7.5	1.5+0.1-0	0.4	1.75	8.3
8x6.2	16.0	8.7	8.7	4.0	12.0	2.0	7.5	1.5+0.1-0	0.4	1.75	6.8
8x10.2(10.4*)	24.0	8.7	8.7	4.0	16.0	2.0	11.5	1.5+0.1-0	0.4	1.75	11.0
10x10.2*(12.2*)	24.0	10.7	10.7	4.0	16.0	2.0	11.5	1.5+0.1-0	0.4	1.75	11.0
12.5x13.5	32.0	13.4	13.4	4.0	24.0	2.0	14.2	1.5+0.1-0	0.4	1.75	14.0
12.5x16.0	32.0	13.4	13.4	4.0	24.0	2.0	14.2	1.5+0.1-0	0.4	1.75	16.2
16.0x16.5	44.0	17.5	17.5	4.0	28.0	2.0	20.2	1.5+0.1-0	0.4	1.75	16.7

② Packaging Specification

Size DxL(mm)	Q'ty per (pcs)	Inner box (pcs)	Measurement (mm)	gross (kg)	Outer carton (pcs)	Measurement (mm)	gross (kg)
4x5.4	2000	20,000	390x195x395	4	40,000	420x410x414	9
5x5.4(5.8*)	1000	10,000	390x195x395	5	20,000	420x410x414	11
6.3x5.4 (5.8*)	1000	10,000	390x235x405	5	20,000	420x410x492	12
6.3x7.7*	1000	10,000	390x235x405	7	20,000	420x410x492	14
8x6.2	1000	10,000	390x235x405	7	20,000	420x410x492	15
8x10.2(10.4*)	500	4,000	390x255x405	6	8,000	420x410x530	13
10x10.2*(12.2*)	500	4,000	390x255x405	8	8,000	420x410x530	17
12.5x13.5	200	1,200	390x255x405	5	2,400	420x410x530	13
12.5x16.0	150	900	390x255x405	5	1,800	420x410x530	13
16.0x16.5	125	625	390x255x405	5	1,250	420x410x530	13

Note: product size don't marked with "\*" mark is an applicable polymer solid aluminium electrolytic capacitor.

More detailed information please contact our company.

**Packaging Specification**

**2. Conductive Polymer Aluminum Solid Capacitors**

**① Bulk package : Standard**

Classification		Standard		
size ΦDxL(mm)	Vinyl bag Qty (pcs)	Inner box (pcs)	Outer carton (pcs)	gross weight (kg)
5×7.5×9,6.3×5.4	2,000	16,000	32,000	11
5.5×9,6.3×6,6.3×8	1,000	12,000	24,000	10
6.3×10.5	1,000	10,000	20,000	14
8×8,8×9,8×11.5	500	7,500	15,000	17
10×12.5	200	4,000	8,000	15

**② Bulk package : Cutting & Forming**

Classification		Cutting & Forming		
size ΦDxL(mm)	Vinyl bag Qty (pcs)	Inner box (pcs)	Outer carton (pcs)	gross weight (kg)
5×7.5×9,6.3×5.4	2,000	10,000	40,000	16
5.5×9,6.3×6,6.3×8	2,000	10,000	40,000	15
6.3×10.5	1,000	7,000	28,000	17
8×8,8×9	500	4,000	16,000	18
8×11.5	500	4,000	16,000	18
10×12.5	200	2,000	8,000	15

**③ Ammo Tape (Fig.1)**

Classification		Ammo Tape		gross weight (kg)
size ΦDxL(mm)	Outer carton (pcs)	Outer carton (pcs)		
6.3Φ	2,000	10,000	8	
8Φ×5-16L	1,000	5,000	7	
10Φ×10~17L	600	3,000	7	

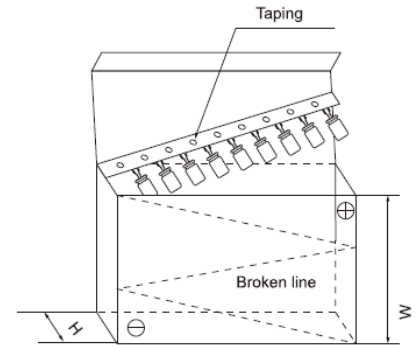


Fig.1

**④ Reel Tape (Fig.2)**

Classification		Roll Reel braid		gross weight (kg)
size ΦDxL(mm)	Inner box (pcs)	Outer carton (pcs)		
6.3Φ	2,000	10,000	6	
8Φ×5-16L	1,600	8,000	12	
10Φ×10~17L	1,000	5,000	14	

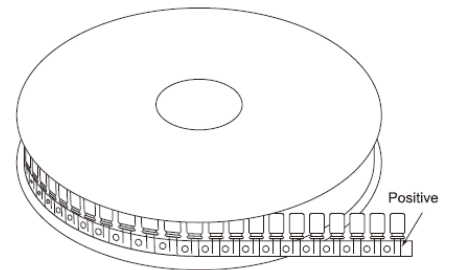


Fig.2

**3. Radial Lead Type Aluminium Electrolytic Capacitors**

**① Bulk package : Standard**

Standard					Standard				
size DxL(mm)	Vinyl bag Qty (pcs)	Inner box (pcs)	Outer carton (pcs)	gross weight (kg)	size DxL(mm)	Vinyl bag Qty (pcs)	Inner box (pcs)	Outer carton (pcs)	gross weight (kg)
4×5	2,000	24,000	48,000	13	10×14~10×15	200	3,600	7,200	15
4×7	2,000	20,000	40,000	12	10×16~10×18	200	3,600	7,200	15
5×5	2,000	20,000	40,000	11	10×20~10×21	200	3,000	6,000	16
5×7	2,000	16,000	32,000	14	10×22~10×25	200	2,400	4,800	16
5×9~5×11	1,000	12,000	24,000	11	10×26	200	2,400	4,800	17
5×15	1,000	10,000	20,000	13	10×27~10×35	200	1,800	3,600	16
6.3×5	2,000	16,000	32,000	13	12.5×13~12.5×16	100	2,400	4,800	15
6.3×7	2,000	12,000	24,000	11	12.5×20~12.5×22	100	1,800	3,600	15
6.3×9~6.3×14	1,000	10,000	20,000	14	12.5×23~12.5×26	100	1,200	2,400	13
6.3×15~6.3×17	1,000	10,000	20,000	14	12.5×30	100	1,200	2,400	15
8×5~8×7	500	10,000	20,000	14	13×13~13×16	100	2,400	4,800	15
8×9~8×12	500	7,500	15,000	16	13×18~13×21	100	1,800	3,600	16
8×14~8×15	500	5,000	10,000	13	13×24~13×26	100	1,200	2,400	12
8×16	500	5,000	10,000	14	13×30	100	1,200	2,400	13
8×20~8×25	200	4,000	8,000	14	13×35~13×36	100	1,000	2,000	14
10×9~10×13	200	4,000	8,000	14	13×38~13×40	100	800	1,600	13

**② Bulk package : Cutting & Forming**

Cutting & Forming					Cutting & Forming				
size ΦDxL(mm)	Vinyl bag Qty (pcs)	Inner box (pcs)	Outer carton (pcs)	gross weight (kg)	size ΦDxL(mm)	Vinyl bag Qty (pcs)	Inner box (pcs)	Outer carton (pcs)	gross weight (kg)
4×5	2,000	40,000	80,000	13	6.3×7	2,000	20,000	40,000	18
4×7	2,000	32,000	64,000	15	6.3×9~6.3×14	1,000	14,000	28,000	19
5×5	2,000	32,000	64,000	14	6.3×15~6.3×17	1,000	10,000	20,000	15
5×7	2,000	32,000	64,000	17	8×5~8×7	500	8,000	16,000	12
5×9~5×11	1,000	20,000	40,000	17	8×9~8×12	500	8,000	16,000	15
5×15	1,000	14,000	28,000	14	8×14~8×15	500	6,000	12,000	15
6.3×5	2,000	20,000	40,000	17	8×16	200	4,000	8,000	11

**② Bulk package : Cutting & Forming**

Classification		Cutting & Forming			Classification		Cutting & Forming		
size ΦDxL(mm)	Vinyl bag Qty (pcs)	Inner box (pcs)	Outer carton (pcs)	gross weight (kg)	size ΦDxL(mm)	Vinyl bag Qty (pcs)	Inner box (pcs)	Outer carton (pcs)	gross weight (kg)
8x20~8x25	200	4,000	8,000	13	12.5x23~12.5x26	200	1,200	2,400	12
10x9~10x13	200	4,000	8,000	13	12.5x30	100	1,000	2,000	11
10x14~10x15	200	4,000	8,000	15	13x13~13x16	200	1,600	3,200	11
10x16~10x18	200	3,200	6,400	14	13x18~13x21	200	1,200	2,400	11
10x20~10x21	200	2,800	5,600	13	13x24~13x26	200	1,200	2,400	11
10x22~10x25	200	2,400	4,800	15	13x30	100	1,000	2,000	13
10x26	200	1,600	3,200	13	13x35~13x36	100	600	1,200	9
10x27~10x35	200	1,600	3,200	14	13x38~13x40	100	600	1,200	12
12.5x13~12.5x16	200	1,600	3,200	11	16x15~16x20	200	1,000	2,000	14
12.5x20~12.5x22	200	1,200	2,400	10	18x15~18x20	200	1,000	2,000	17

**③ For lattice bar type packing of standard& Cutting & Forming ( Fig.3)**

size		Standard		size		Cutting & Forming	
size ΦDxL(mm)	Inner box (pcs)	Outer carton (pcs)	gross weight (kg)	size ΦDxL(mm)	Inner box (pcs)	Outer carton (pcs)	gross weight (kg)
8φ×50~60L	1000	2000	10	8φ×30~45L	1000	4000	13
10φ×30~45L	700	2100	16	8φ×46~50L	1000	3000	14
10φ×46~60L	700	1400	13	10φ×30~45L	700	2800	15
12.5φ×35~45L	460	1380	12	10φ×46~60L	700	2100	16
12.5φ×50~60L	460	920	13	12.5φ×40~45L	460	1840	13
16φ×15~20L	300	1200	9	12.5φ×46~55L	460	1380	12
16φ×21~26L	300	900	8	16φ×21~30L	300	1200	13
16φ×27~32L	300	900	9	16φ×31~45L	300	1200	16
16φ×33~40L	300	900	14	18φ×21~30L	250	1000	13
16φ×45L	300	600	12	18φ×31~45L	250	1000	19
18φ×15~20L	250	1000	9	18φ×50L	250	750	16
18φ×21~45L	250	750	14	22φ×25~30L	160	640	11
18φ×50L	250	500	11	22φ×31~45L	160	640	16
22φ×25~45L	160	480	13	22φ×50L	160	480	13
22φ×50L	160	320	11				

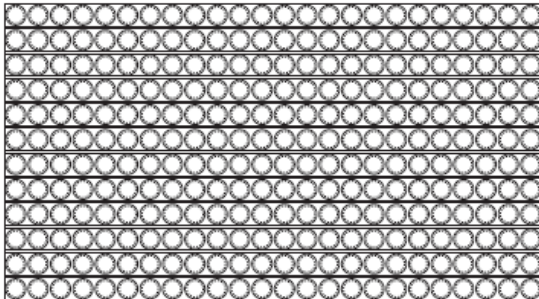


Fig.3

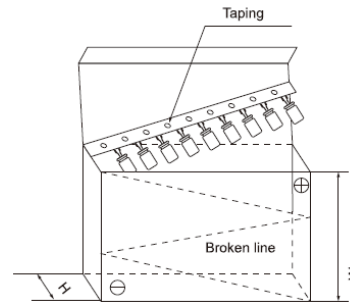


Fig.4

**④ For Taping Ammo & Reel(Fig.4)**

Classification		Ammo Tape					
size ΦDxL(mm)	Inner box (pcs)	Outer carton (pcs)	gross weight (kg)	size ΦDxL(mm)	Inner box (pcs)	Outer carton (pcs)	gross weight (kg)
4φ×5~7L	3000	15000	5	12.5φ×12.5~31L	500	2000	14
5φ×5~15L	2600	13000	8	13φ×13~31L	500	2000	14
6.3φ×5~17	2000	10000	8	12.5φ×35~41L	500	1500	12
8φ×5~17L	1200	6000	10	13φ×35~41L	500	1500	12
8φ×18~30L	1200	4800	13	16φ×15~32L	300	1200	14
10φ×9~17L	800	4000	10	16φ×35~40L	300	900	13
10φ×18~32L	800	3200	11	18φ×16~32L	250	1000	16
10φ×35L	800	2400	14	18φ×35~35.5L	250	750	14

**⑤ Roll Reel braid(Fig.5)**

Classification		Ammo Tape	
size ΦDxL(mm)	quantity (pcs/box)	quantity (pcs/box)	gross weight (kg/box)
4x5~7L	3,000	15,000	6
5x5~11L	2,400	12,000	8
6.3x5~11L	2,000	10,000	9
8x5~16L	1,600	8,000	12
8x20L	1,000	5,000	12
10x10~16L	1,200	6,000	13
10x17~20L	1,000	5,000	12

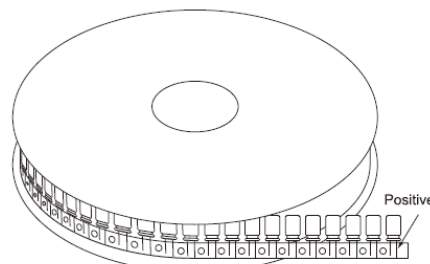


Fig.5

**4. SNAP-IN Type Aluminium Electrolytic Capacitors(Fig.6)**

size	weighe	inner box	outer carton
$\Phi D \times L$ (mm)	(g/pcs)	(pcs)	(pcs)
22x25 ~ 30	20 ~ 25	100	800
22x35 ~ 50	25 ~ 30	100	600
25x25 ~ 30	25 ~ 30	100	800
25x35 ~ 50	30 ~ 35	100	600
25x55~ 70	38.5~62	100	400
30x20 ~ 30	30 ~ 35	50	400
30x35 ~ 50	35 ~ 40	50	300
30 x 55~70	45~50	50	200
35x25 ~ 30	40 ~ 45	40	320
35x35 ~ 50	45 ~ 50	40	240
35x55 ~ 70	55~70	40	160

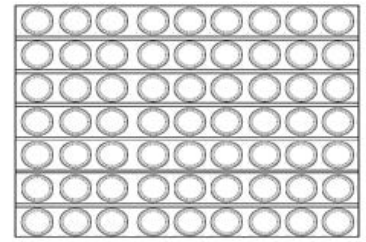


Fig.6

**5. SCREW Type Aluminium Electrolytic Capacitors(Fig.7)**

size	outer carton
$\Phi D \times L$ (mm)	(pcs)
35x50~100	42
51x70~115	40
64x96~115	15
77x100~236	15
90*105~236	12

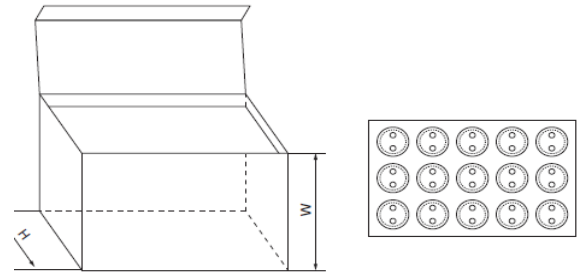


Fig.7