

Taping specifications for Roldal Type:

Fig.1 : Code T1/R1 : Ammo / Reel Tape ($\Phi 4 - \Phi 6.3$)

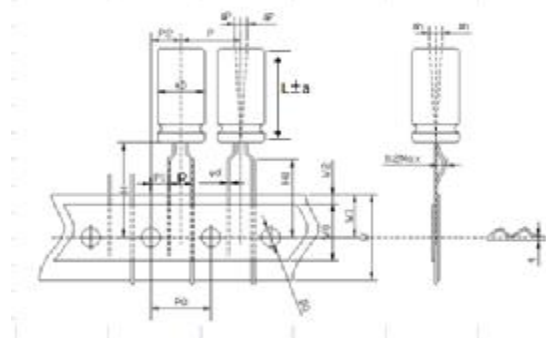


Fig.2 : Code T1/R1 : Ammo / Reel Tape ($\Phi 8$) ($P3=2.0-2.7, \theta=110^\circ \pm 15^\circ$)

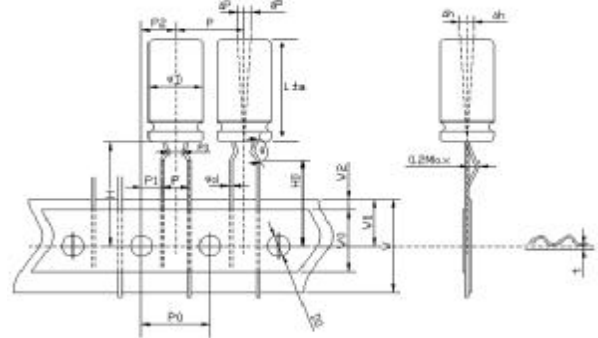


Fig.3 : Code T1/R1 : Ammo / Reel Tape ($\Phi 10$)

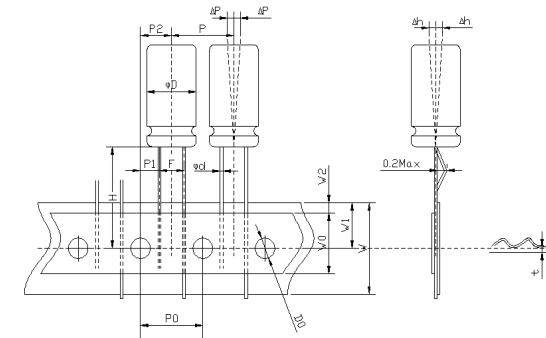


Fig.4 : Code T1 : Ammo Tape ($\Phi 13 - \Phi 18$)

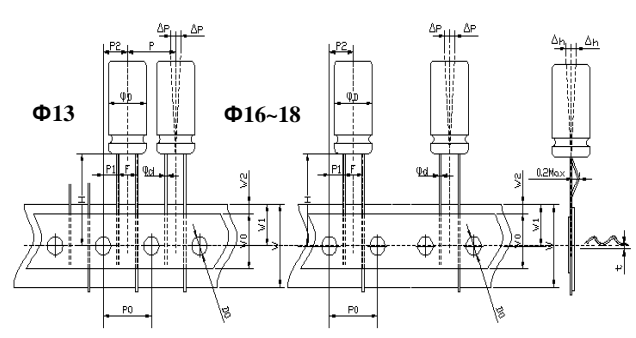


Fig.5 : Code T2/R2 , $\Phi 4 \sim \Phi 8$

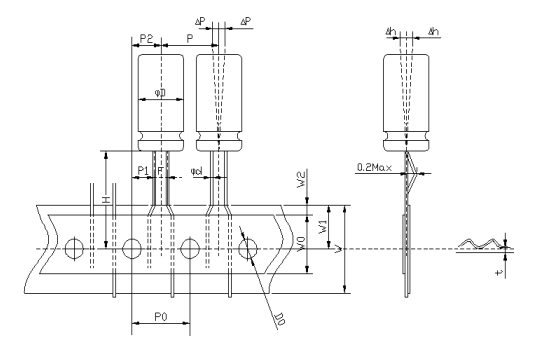
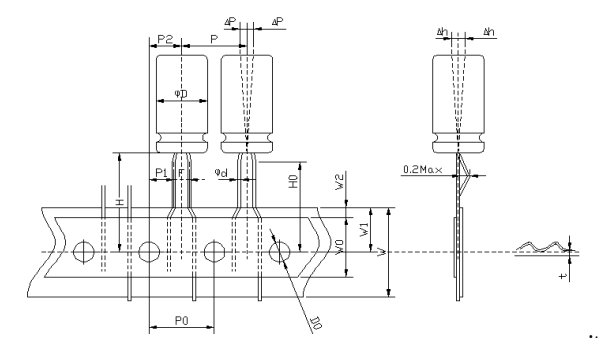


Fig.6 : Code T4/R3 : Ammo / Reel Formed Tape ($\Phi 4 \sim \Phi 5 / \text{pitch } 2.5\text{mm}$)



unit : mm

Code	Symbol	φd	P	P0	P1	P2	F	W	W0	W1	W2	H	H0	D0	ΔP	Δh	t
T1/R1	Tolerance	± 0.05	± 1.0	± 0.3	± 0.5	± 1.0	$+0.6/-0.2$	± 0.5	min	± 0.5	max	± 0.5	± 0.5	± 0.3	max	max	± 0.3
	4x5	0.45	12.7	12.7	3.85	6.35	5.0	18.0	8.0	9.0	2.0	18.5	16.0	4.0	0.2	0.2	0.6
	5x5~11	0.45or0.5	12.7	12.7	3.85	6.35	5.0	18.0	8.0	9.0	2.0	18.5	16.0	4.0	0.2	0.2	0.6
	6.3x5~11	0.45or0.5	12.7	12.7	3.85	6.35	5.0	18.0	8.0	9.0	2.0	18.5	16.0	4.0	0.2	0.2	0.6
	Tolerance	± 0.05	± 1.0	± 0.3	± 0.7	± 1.0	$+0.6/-0.2$	± 0.5	min	± 0.5	max	± 0.5	± 0.5	± 0.3	max	max	± 0.3
	8x5~30	0.45~0.6	12.7	12.7	3.85	6.35	5	18.0	8.0	9.0	2.0	18.5	16.0	4.0	0.2	0.2	0.6
	Tolerance	± 0.05	± 1.0	± 0.3	± 0.5	± 1.0	$+0.6/-0.2$	± 0.5	min	± 0.5	max	± 0.5	—	± 0.3	max	max	± 0.2
	10x10~30	0.6	12.7	12.7	3.85	6.35	5	18.0	8.0	9.0	2.0	18.5	—	4.0	0.2	0.2	0.7
	Tolerance	± 0.05	± 1.0	± 0.3	± 0.7	± 1.3	$+0.6/-0.2$	± 0.5	min	± 0.5	max	± 0.5	—	± 0.3	max	max	± 0.3
	12.5x15~25	0.6	15	15	5.00	7.50	5.0	18.0	8.0	9.0	2.0	18.5	—	4.0	0.2	0.2	0.7
13x13~40	0.6	15	15	5.00	7.50	5.0	18.0	8.0	9.0	2.0	18.5	—	4.0	0.2	0.2	0.7	
16x16~40	0.8	30	15	3.75	7.50	7.5	18.0	8.0	9.0	2.0	18.5	—	4.0	0.2	0.2	0.7	
18x20~32	0.8	30	15	3.75	7.50	7.5	18.0	8.0	9.0	2.0	18.5	—	4.0	0.2	0.2	0.7	
Code	Symbol	Φd	P	P1	P0	P2	F	W	W0	W1	W2	H	—	D0	Δp	—	t
T2/R2	Tolerance	± 0.05	± 1.0	± 0.5	± 0.3	± 1.0	$+0.6/-0.2$	± 0.5	min	± 0.5	max	± 0.5	—	± 0.3	max	—	± 0.2
	4x5~7	0.45	12.7	12.7	5.6	6.35	1.5	18	8	9	2.0	18.5	—	4	0.2	—	0.6
	5x5~11	0.45or0.5	12.7	12.7	5.35	6.35	2	18	8	9	2.0	18.5	—	4	0.2	—	0.6
	6.3x5~11	0.45or0.5	12.7	12.7	5.1	6.35	2.5	18	8	9	2.0	18.5	—	4	0.2	—	0.6
	8x5~20	0.6	12.7	12.7	4.6	6.35	3.5	18	8	9	2.0	18.5	—	4	0.2	—	0.6
Code	sign	Φd	P	P0	P1	P2	F	W	W0	W1	W2	H	H0	D0	ΔP	Δh	t
	Tolerance	± 0.05	± 1.0	± 0.3	± 0.5	± 1.0	$+0.6/-0.2$	± 0.5	min	± 0.5	max	± 0.5	± 0.5	± 0.3	max	max	± 0.3
T4/R3	4x5~4x7	0.45	12.7	12.7	5.1	6.35	2.5	18.0	8.0	9.0	2.0	18.5	17.0	4.0	0.2	0.2	0.6
	5x5~5x11	0.45or0.5	12.7	12.7	5.1	6.35	2.5	18.0	8.0	9.0	2.0	18.5	17.0	4.0	0.2	0.2	0.6